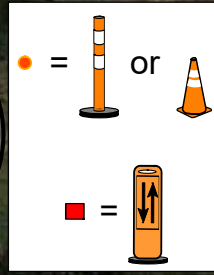
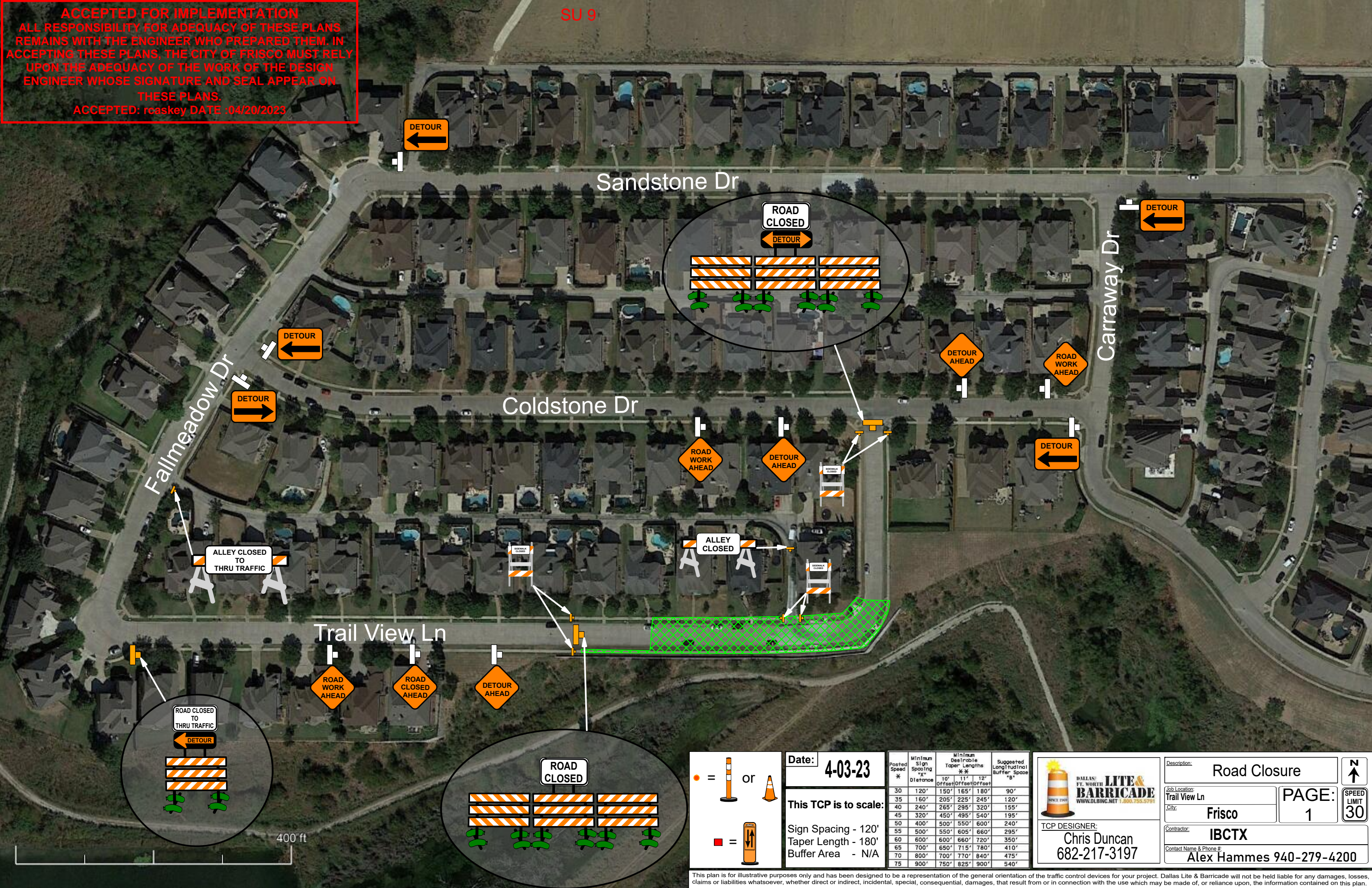


ACCEPTED FOR IMPLEMENTATION
ALL RESPONSIBILITY FOR ADEQUACY OF THESE PLANS
REMAINS WITH THE ENGINEER WHO PREPARED THEM. IN
ACCEPTING THESE PLANS, THE CITY OF FRISCO MUST RELY
UPON THE ADEQUACY OF THE WORK OF THE DESIGN
ENGINEER WHOSE SIGNATURE AND SEAL APPEAR ON
THESE PLANS.
ACCEPTED: roaskey DATE :04/20/2023

SU 9



Date: **4-03-23**
This TCP is to scale:
Sign Spacing - 120'
Taper Length - 180'
Buffer Area - N/A

Post/rd Speed %	Minimum Sign Spacing * Distance	Minimum Detractable Taper Lengths * * *			Suggested Longitudinal Buffer Space * * *
		10' Offset	11' Offset	12' Offset	
30	120'	150'	165'	180'	90'
35	160'	205'	225'	245'	120'
40	240'	265'	295'	320'	155'
45	320'	450'	495'	540'	195'
50	400'	500'	550'	600'	240'
55	500'	550'	605'	660'	295'
60	600'	600'	660'	720'	350'
65	700'	650'	715'	780'	410'
70	800'	700'	770'	840'	475'
75	900'	750'	825'	900'	540'

DALLAS LITE & BARRICADE
WWW.DLBINC.NET 1.800.735.5791

TCP DESIGNER:
Chris Duncan
682-217-3197

Description: **Road Closure**

Job Location: **Trail View Ln**

City: **Frisco**

Contractor: **IBCTX**

Contact Name & Phone #: **Alex Hammes 940-279-4200**

PAGE: **1**

SPEED LIMIT **30**

This plan is for illustrative purposes only and has been designed to be a representation of the general orientation of the traffic control devices for your project. Dallas Lite & Barricade will not be held liable for any damages, losses, claims or liabilities whatsoever, whether direct or indirect, incidental, special, consequential, damages, that result from or in connection with the use which may be made of, or reliance upon, the information contained on this plan.