

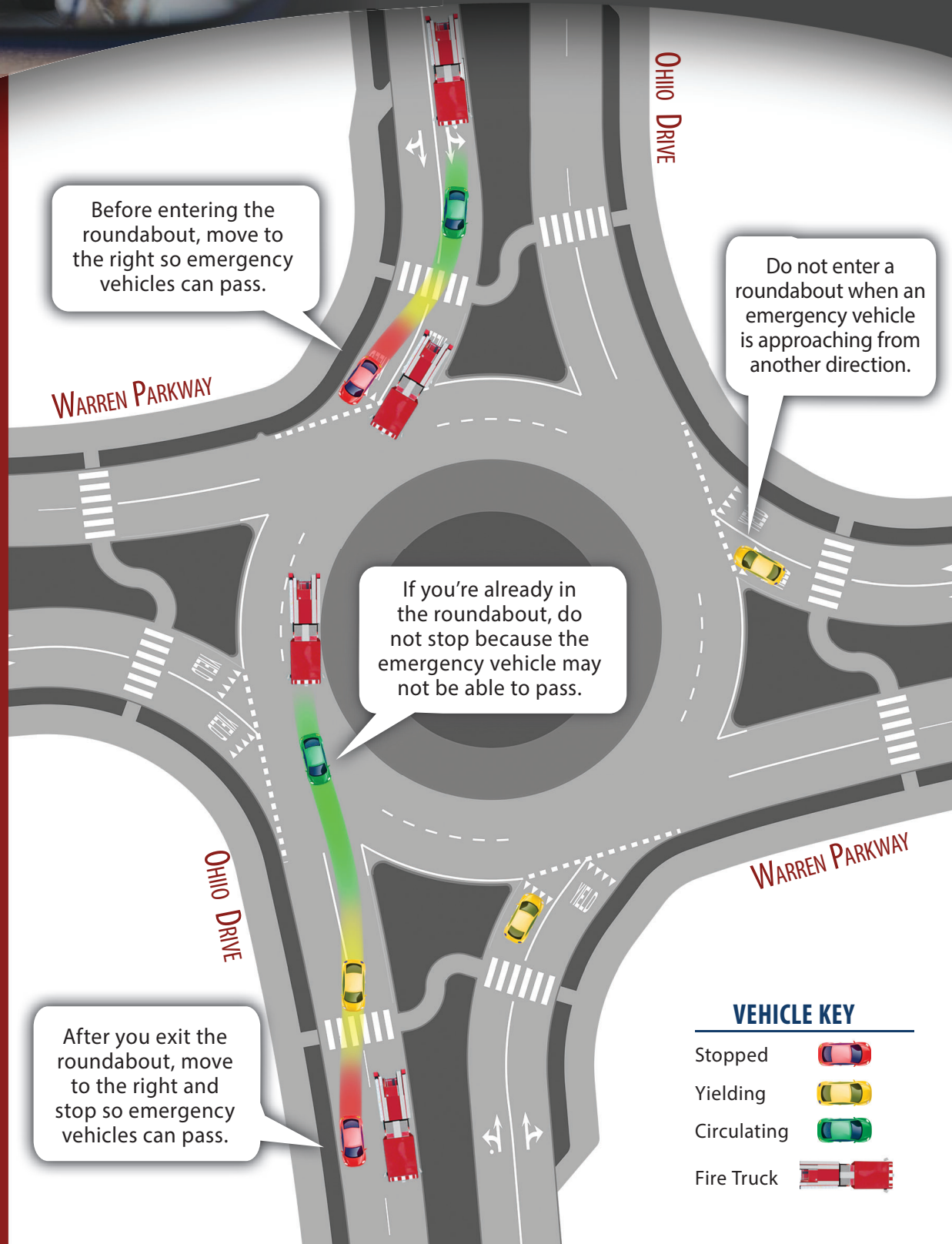
LET'S TALK ABOUT THIS ROUNDABOUT!

OHIO DRIVE & WARREN PARKWAY

EMERGENCY VEHICLE: WHERE DO I PULLOVER?

What to do when an emergency vehicle approaches?

- In roundabouts, drivers must clear a roundabout if they hear (or see) an emergency vehicle coming.
- Do not enter a roundabout if you notice an emergency vehicle approaching.
- Drivers inside a roundabout should exit as soon as possible, then pull over.



VEHICLE KEY

Stopped	
Yielding	
Circulating	
Fire Truck	

By law, drivers must pull over for emergency vehicles.